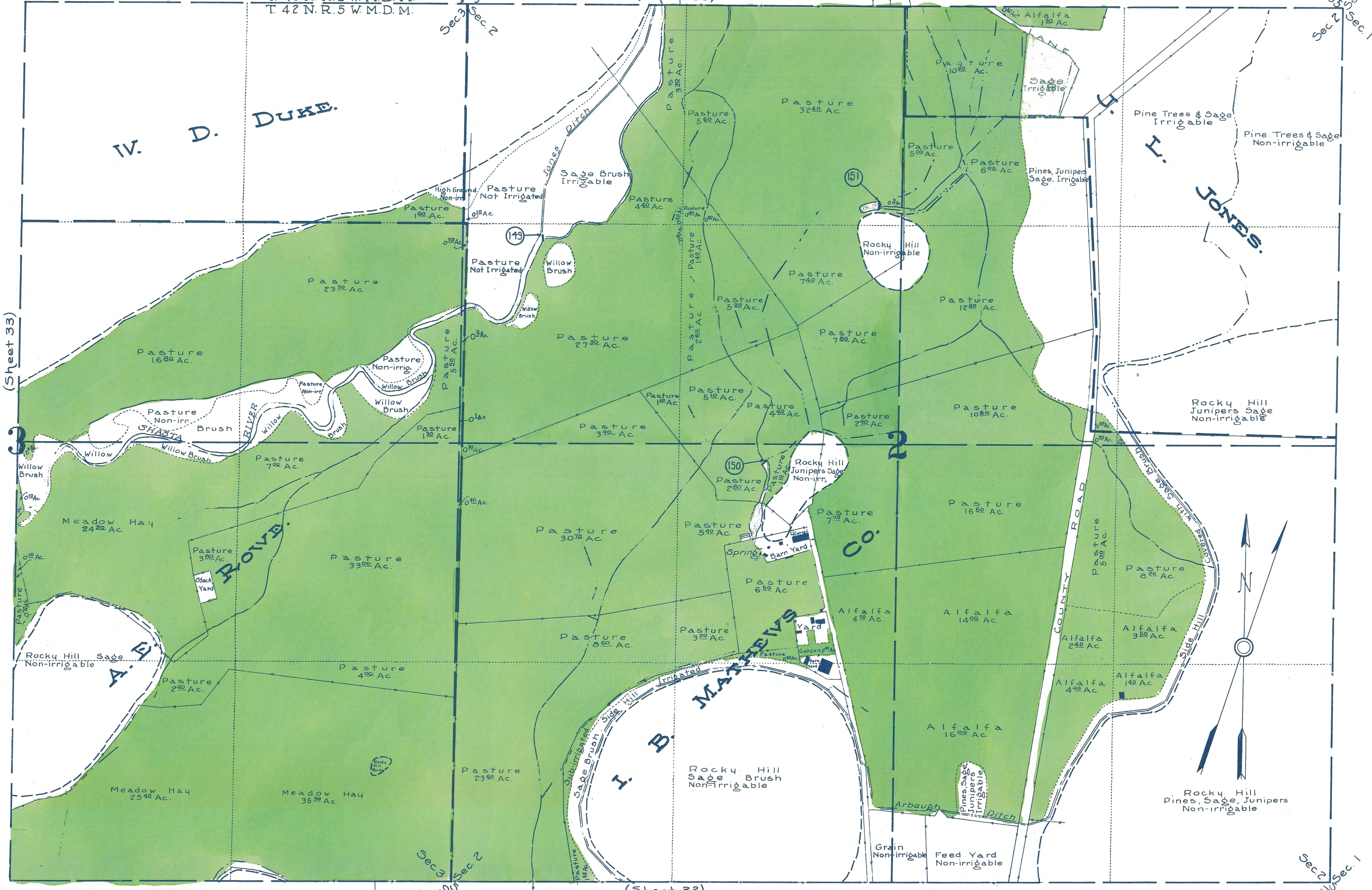


T. 43 N. R. 5 W. M. D. M.
T. 42 N. R. 5 W. M. D. M.

(Sheet 35)



(Sheet 32)

STATE OF CALIFORNIA
DEPARTMENT OF PUBLIC WORKS
DIVISION OF WATER RIGHTS
**LANDS IRRIGATED FROM SHASTA RIVER
AND TRIBUTARIES**
SISKIYOU COUNTY CALIFORNIA
SHOWN BY A
PLANE TABLE SURVEY

SCALE 1" = 300 FT.

1923

M.D. 5327

34