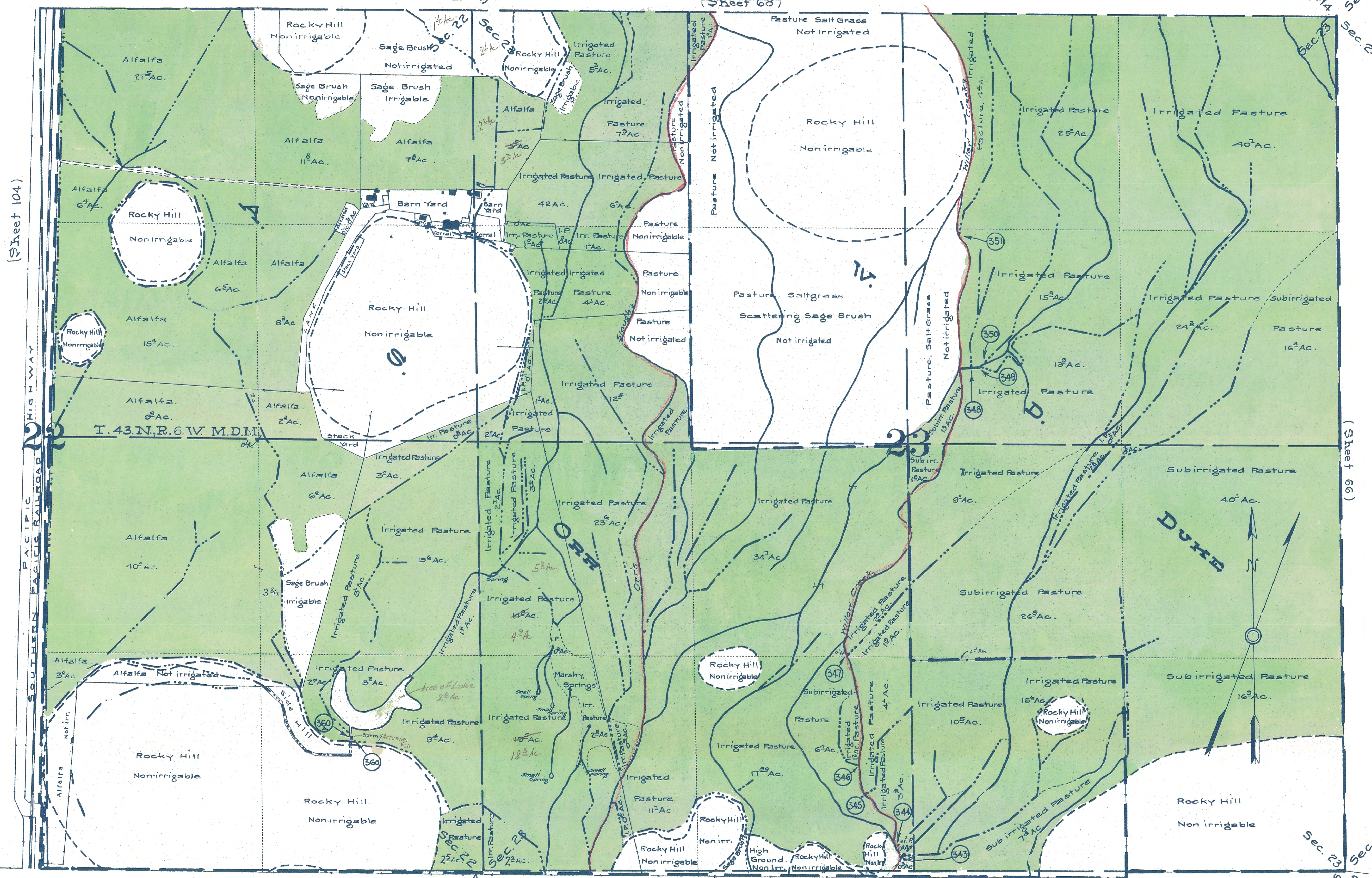


(Sheet 104)



STATE OF CALIFORNIA
 DEPARTMENT OF PUBLIC WORKS
 DIVISION OF WATER RIGHTS

**LANDS IRRIGATED FROM SHASTA RIVER
 AND TRIBUTARIES**

SISKIYOU COUNTY CALIFORNIA

SHOWN BY A
PLANE TABLE SURVEY

M.D. 5327

SCALE 1" = 300 FT.

1923

59