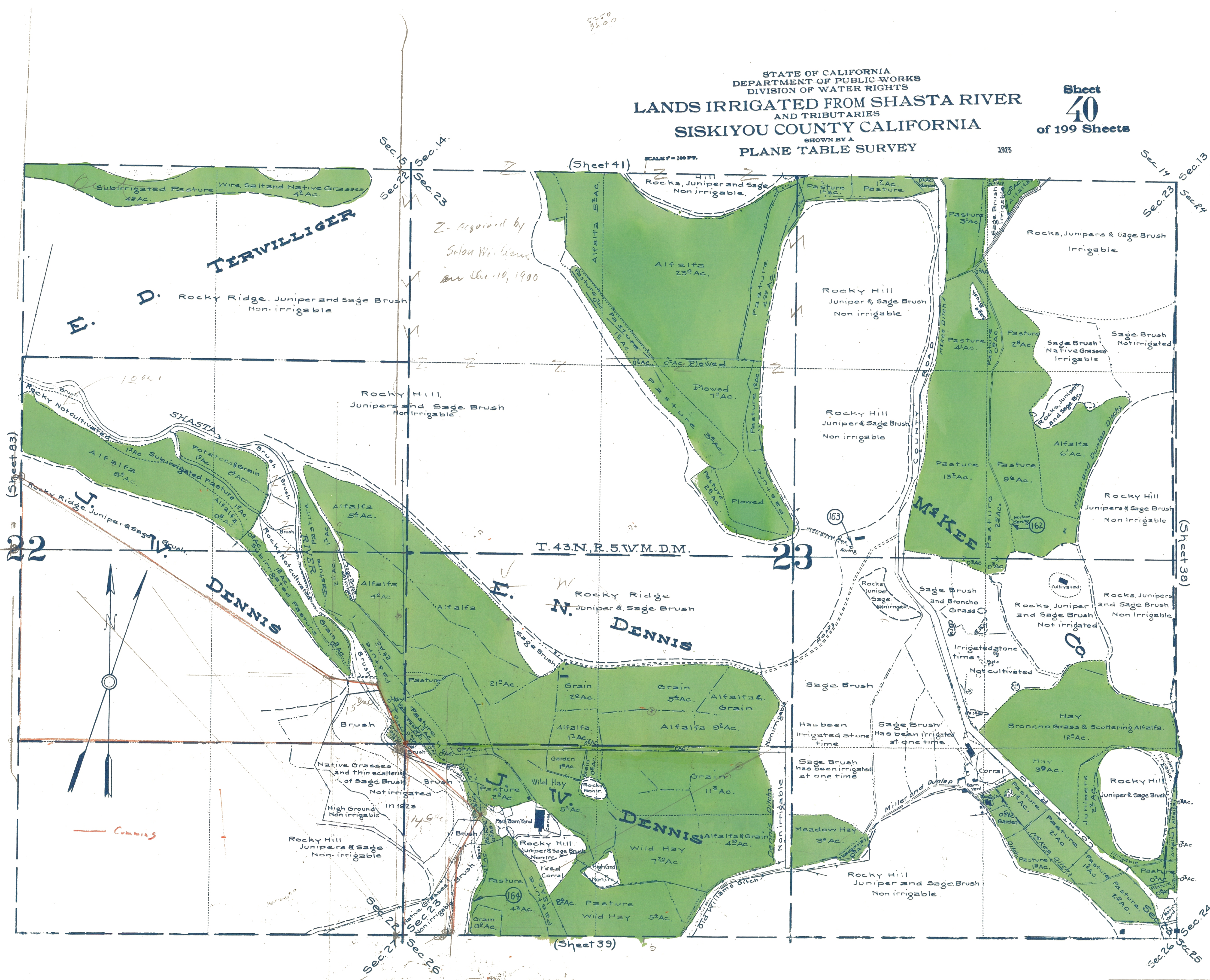


STATE OF CALIFORNIA
 DEPARTMENT OF PUBLIC WORKS
 DIVISION OF WATER RIGHTS
**LANDS IRRIGATED FROM SHASTA RIVER
 AND TRIBUTARIES**
SISKIYOU COUNTY CALIFORNIA
 SHOWN BY A
PLANE TABLE SURVEY

Sheet
40
 of 199 Sheets

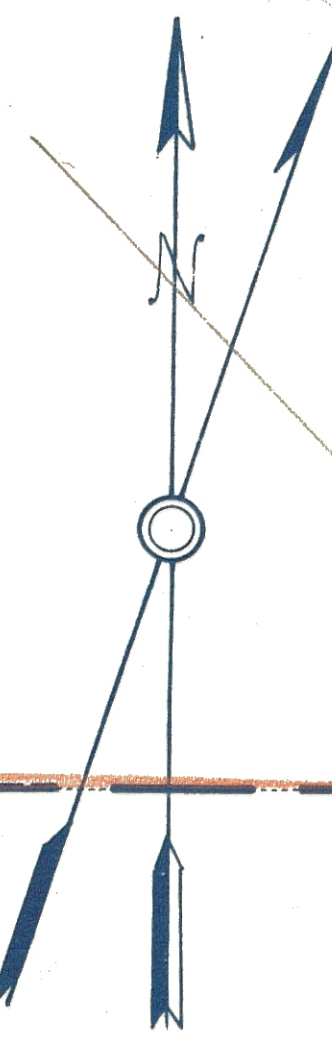
1923

5250
 3600



*Z. Acquired by
 Solon Williams
 on Dec. 10, 1900*

Cummins



(Sheet 83)

(Sheet 38)

(Sheet 41)

(Sheet 39)

40

M.D. 5327