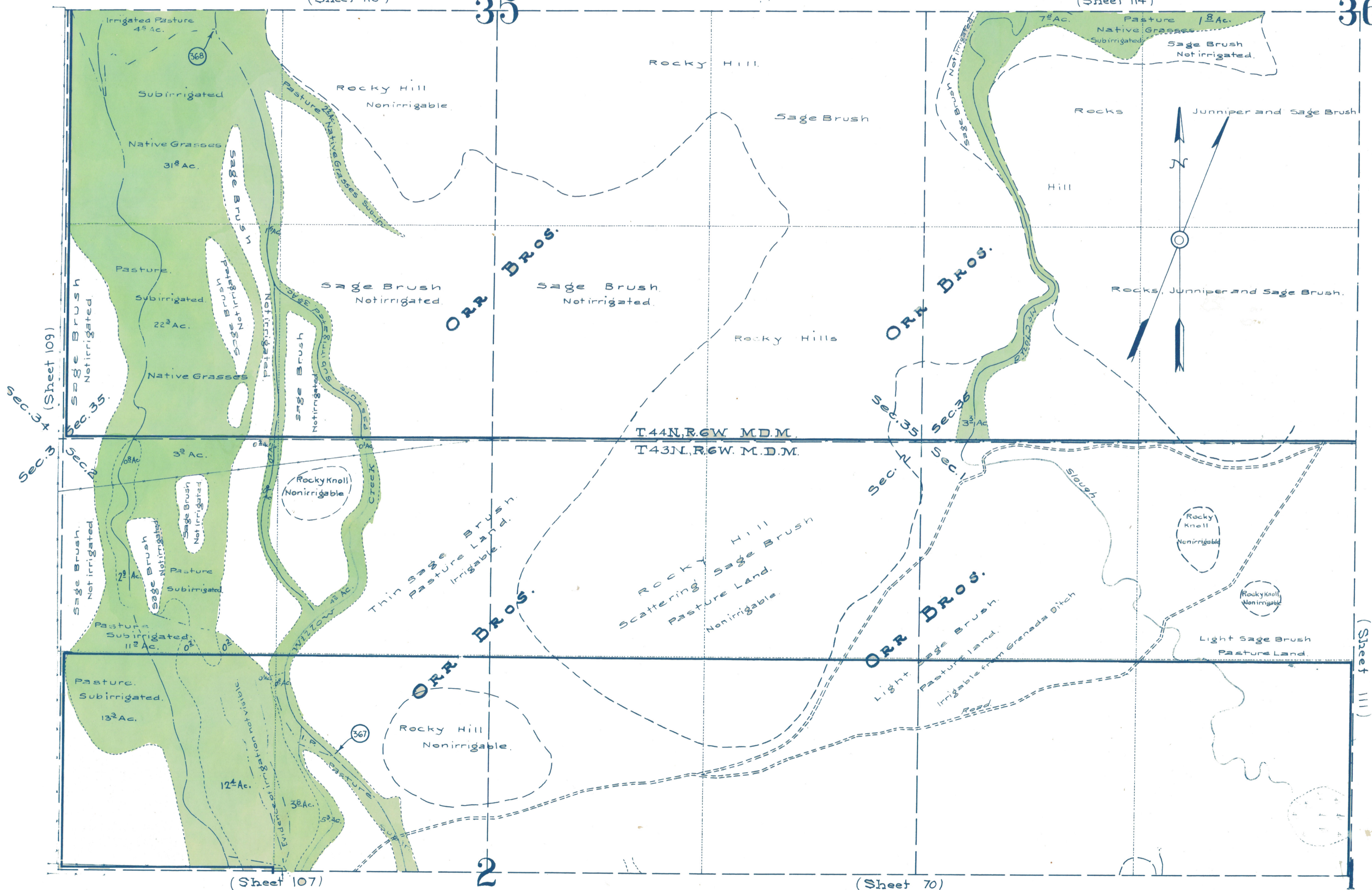


(Sheet 116)

35

(Sheet 114)

36



STATE OF CALIFORNIA  
DEPARTMENT OF PUBLIC WORKS  
DIVISION OF WATER RIGHTS

M.D. 5327

**LANDS IRRIGATED FROM SHASTA RIVER  
AND TRIBUTARIES  
SISKIYOU COUNTY CALIFORNIA**

SHOWN BY A  
**PLANE TABLE SURVEY**

SCALE 1" = 300 FT.

1922