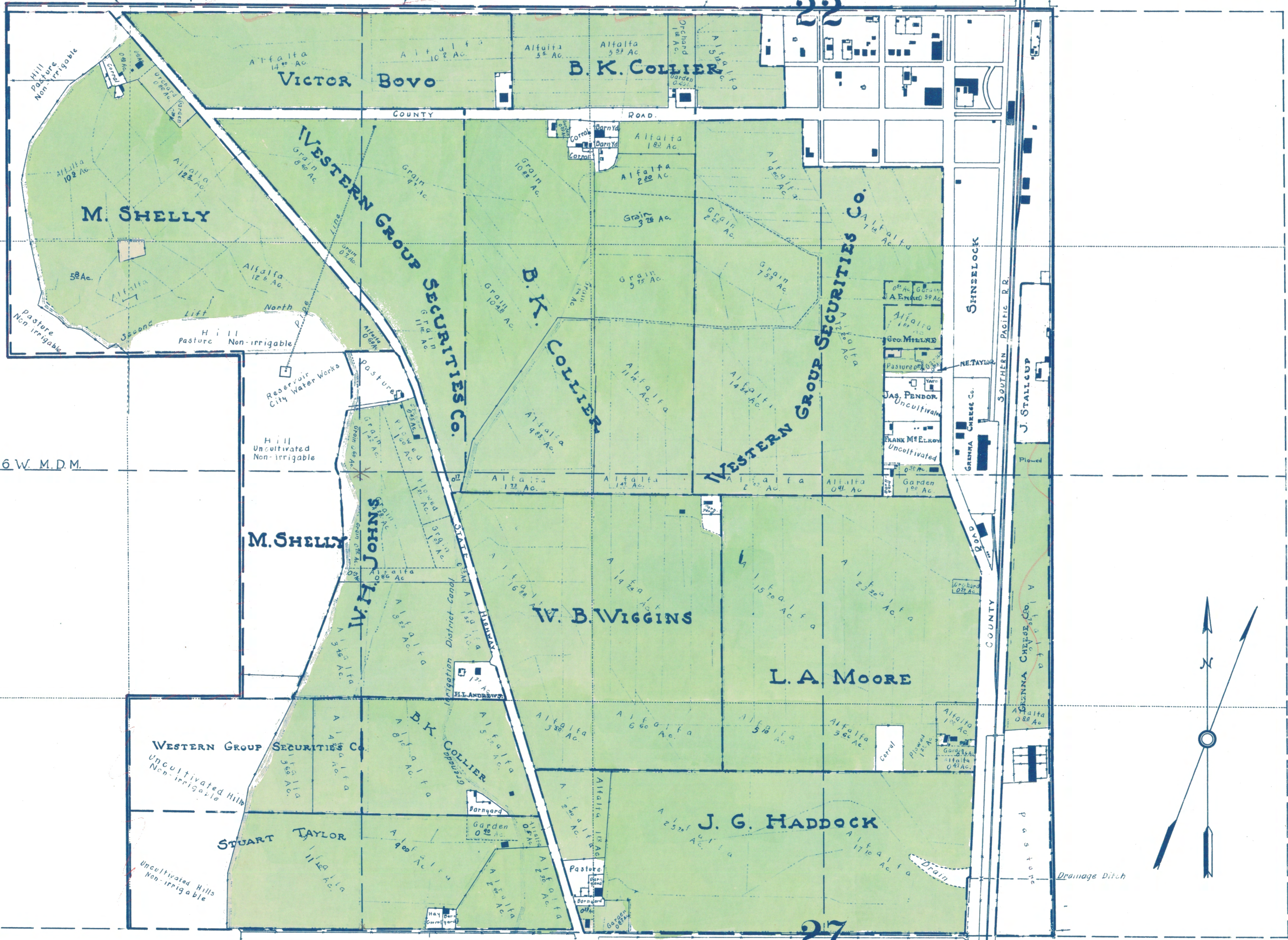


21

(Sheet 178)

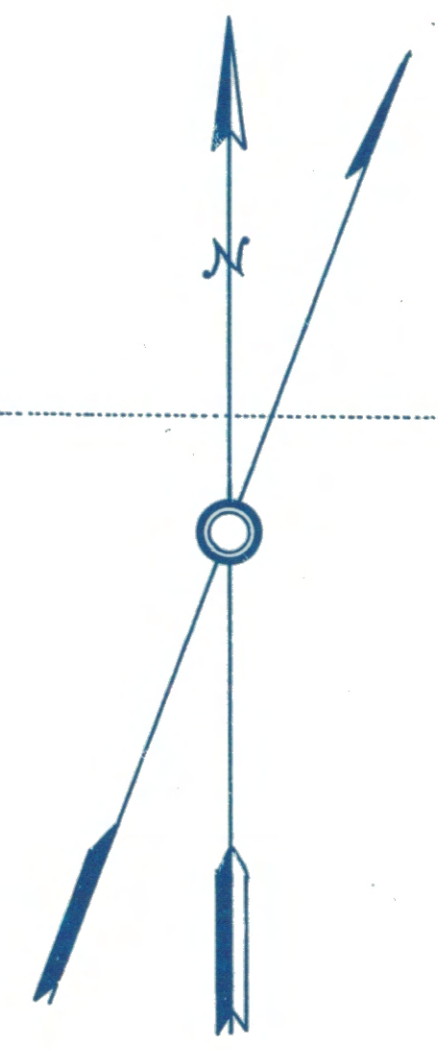
(Sheet 121)

22



T.44 N. R.6 W. M.D.M.

(Sheet 117)



28

(Sheet 112)

27

STATE OF CALIFORNIA
 DEPARTMENT OF PUBLIC WORKS
 DIVISION OF WATER RIGHTS

M.D. 5327

**LANDS IRRIGATED FROM SHASTA RIVER
 AND TRIBUTARIES
 SISKIYOU COUNTY CALIFORNIA**

SHOWN BY A
PLANE TABLE SURVEY

SCALE 1" = 300 FT.

1922