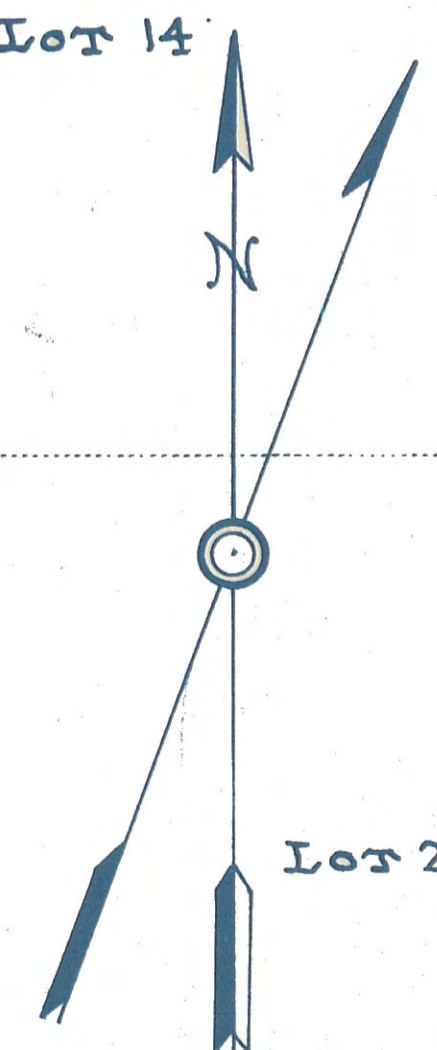


Spillway
Water Surface 0'
Spillway Crest 7'

Area Maximum Capacity Level	10.5 Acres.
Area of Water Surface	9.3 Acres.
Mean	9.9 Acres.
Depth of Water to bottom of Spillway	7.3

Dobkins Lake
7.3 Ac. Ft.



STATE OF CALIFORNIA
DEPARTMENT OF PUBLIC WORKS
DIVISION OF WATER RIGHTS
**LANDS IRRIGATED FROM SHASTA RIVER
AND TRIBUTARIES**
SISKIYOU COUNTY CALIFORNIA
SHOWN BY A
SCALE 1" = 300 FT. **TRANSIT AND STADIA SURVEY** 1923

M.D. 5327