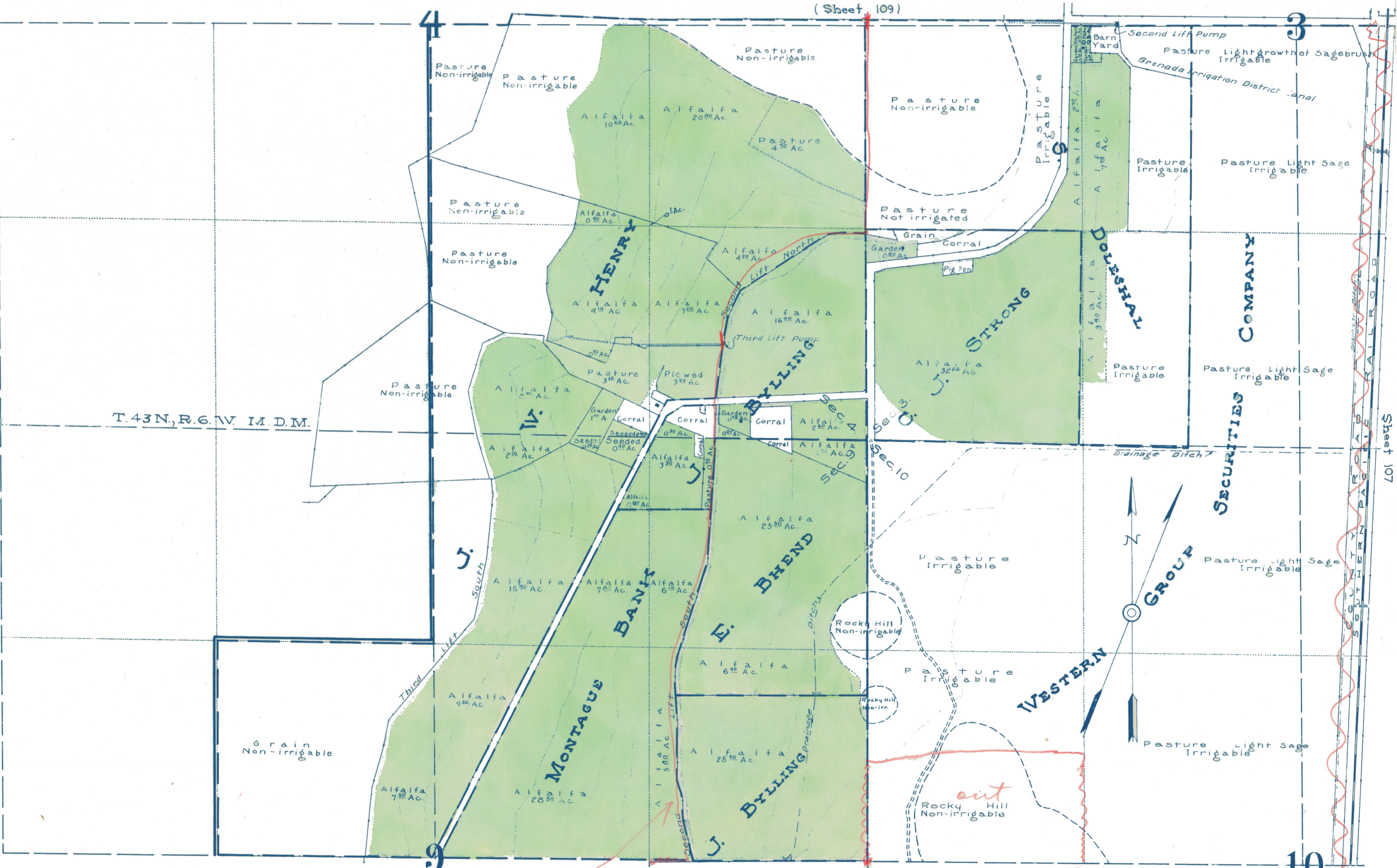


(Sheet 109)

3

T.43N., R.6.W. M.D.M.



(Sheet 105)

10

*out mark of this line*

STATE OF CALIFORNIA DEPARTMENT OF PUBLIC WORKS DIVISION OF WATER RIGHTS M.D. 5327

LANDS IRRIGATED FROM SHASTA RIVER AND TRIBUTARIES SISKIYOU COUNTY CALIFORNIA SHOWN BY A PLANE TABLE SURVEY

SCALE 1" = 300 FT.

1922