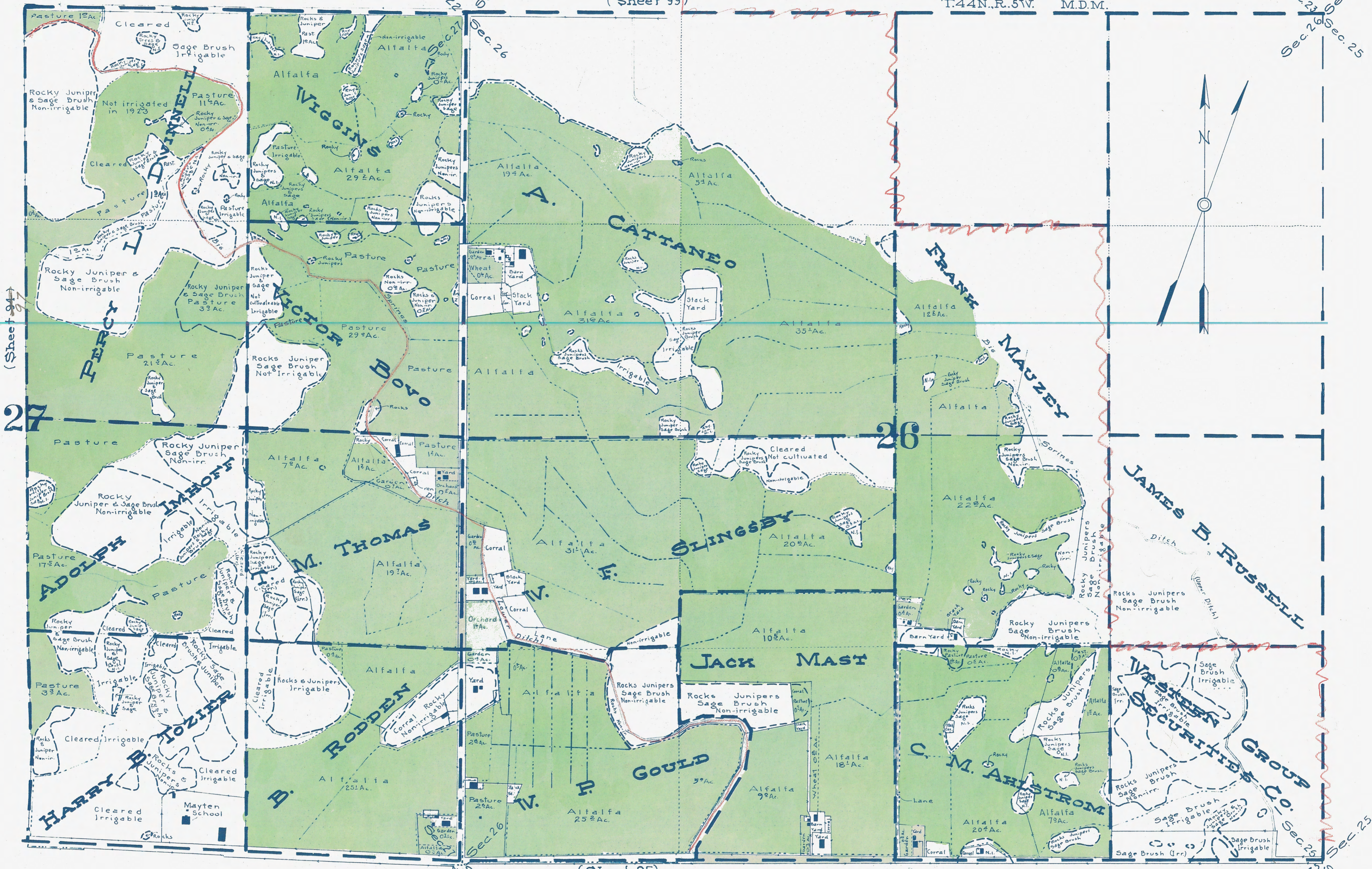


(Sheet 99)

T.44N.,R.5W. M.D.M.



(Sheet 94)

27

26

(Sheet 95)

STATE OF CALIFORNIA
 DEPARTMENT OF PUBLIC WORKS
 DIVISION OF WATER RIGHTS

**LANDS IRRIGATED FROM SHASTA RIVER
 AND TRIBUTARIES**

SISKIYOU COUNTY CALIFORNIA M.D. 5327

SHOWN BY A
PLANE TABLE SURVEY

SCALE 1" = 300 FT.

1925

96